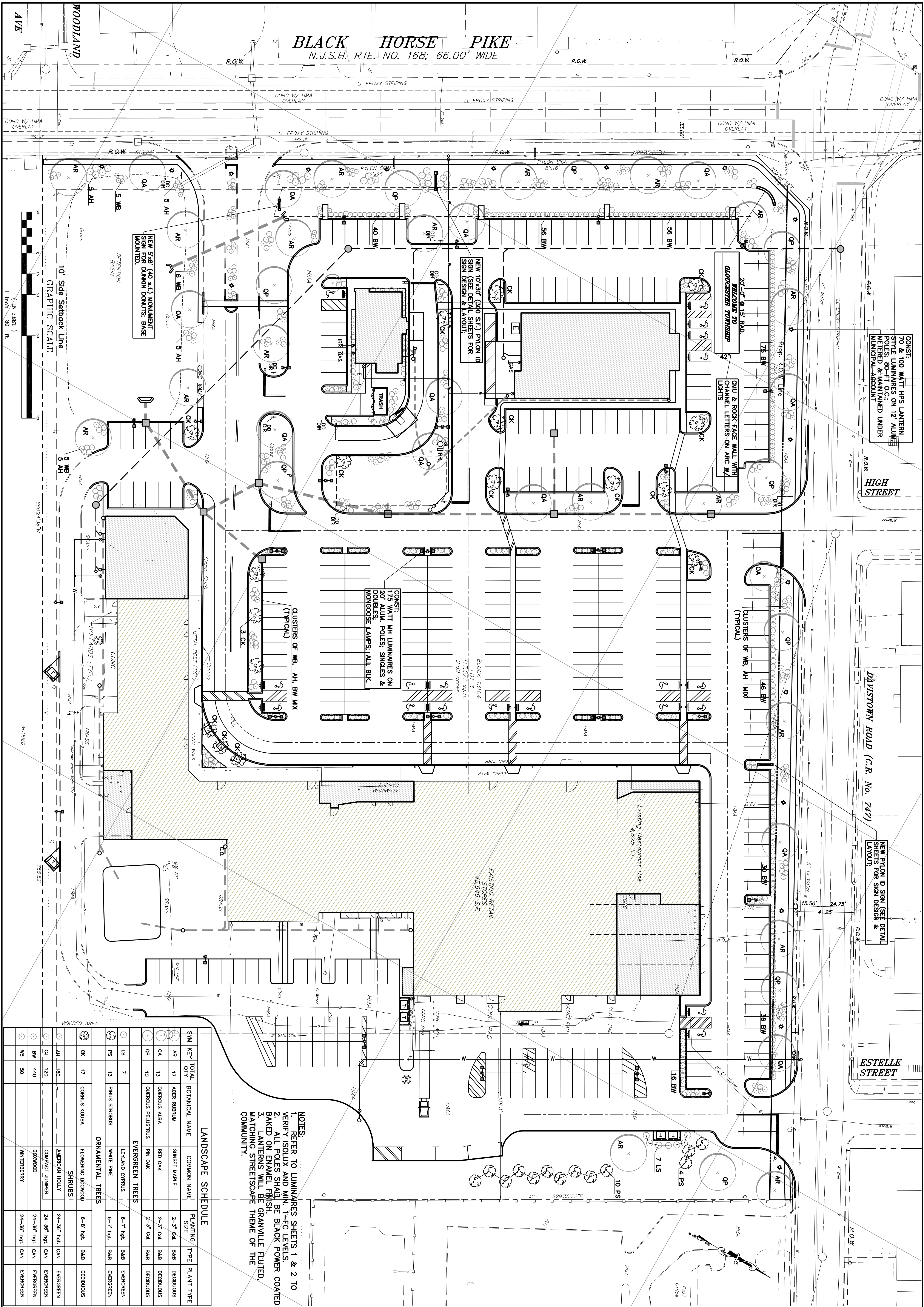


BLACK HORSE PIKE

N.J.S.H. RTE. NO. 168; 66.00' WIDE



CONSTR: 100 WAIT FPS LANTERN POLES 80' MAINTAINED UNDER MUNICIPAL ACCOUNT

HIGH STREET

DAVISTOWN ROAD (C.R. No. 747)

NEW PYLON ID SIGN (SEE DETAIL SHEETS FOR SIGN DESIGN & LAYOUT)

ESTELLE STREET

NEW 5'x8' (40 S.F.) MONUMENT SIGN FOR DUNKIN DONUTS BASE MOUNTED.

NEW 10'x30' (300 S.F.) PYLON ID SIGN (SEE DETAIL SHEETS FOR SIGN DESIGN & LAYOUT)

CONSTR: 175 WAIT MH LUMINAIRES ON 20' HGT. POLES, SINGLES & MONGOOSE LAMPS, ALL B.K.

BLOCK 13104 LOT 3 417,577 sq. ft. 9.59 acres

EXISTING DETAIL STORAGE 45,949 S.F.

Existing Restaurant Use 4,625 S.F.

- NOTES:**
- REFER TO LUMINAIRES SHEETS 1 & 2 TO VERIFY ISOLUX AND MIN. 1-FC LEVELS.
 - ALL POLES SHALL BE BLACK POWER COATED BAKED ON ENAMEL FINISH.
 - LANTERNS WILL BE GRANVILLE FLUTED, MATCHING STREETSCAPE THEME OF THE COMMUNITY.

LANDSCAPE SCHEDULE

SYM KEY	TOTAL QTY	BOTANICAL NAME	COMMON NAME	PLANTING SIZE	TYPE	PLANT TYPE
AR	17	ACER RUBRUM	SWEET MAPLE	2-3" Cal.	BAB	DECIDUOUS
QA	13	QUERCUS ALBA	RED OAK	2-3" Cal.	BAB	DECIDUOUS
QP	10	QUERCUS PEALSTRUS	PIN OAK	2-3" Cal.	BAB	DECIDUOUS
EVERGREEN TREES						
LS	7	LEUCODYPERUS	WHITE PINE	6-7" hgt.	BAB	EVERGREEN
PS	13	FINUS STROBUS	WHITE PINE	6-7" hgt.	BAB	EVERGREEN
ORNAMENTAL TREES						
OK	17	CORNUS KOUSA	FLOWERING DOGWOOD	6-8" hgt.	BAB	DECIDUOUS
SHRUBS						
AH	180	AMERICAN HOLLY	AMERICAN HOLLY	24-36" hgt.	CAN	EVERGREEN
CJ	120	COMPACT JUMPER	COMPACT JUMPER	24-36" hgt.	CAN	EVERGREEN
BW	440	BOWWOOD	BOWWOOD	24-36" hgt.	CAN	EVERGREEN
WB	50	WINTERBERRY	WINTERBERRY	24-36" hgt.	CAN	EVERGREEN

10' Side Setback Line GRAPHIC SCALE
1 inch = 30 ft.

CAPE ENGINEERING, LLC
ENGINEERING & MANAGEMENT
913 Madison Avenue, Cape May, NJ 08204
Phone: (856) 340-9920

LIGHTING & LANDSCAPING PLAN
REVITALIZATION & EXPANSION OF
'THE SHoppes AT GLOUCESTER TWP'
S.R. 168 @ DAVISTOWN ROAD (CR 747)
GLOUCESTER TOWNSHIP
CAMDEN COUNTY, NJ

NO.	DATE	REVISIONS	BY	CHECKED BY
1	1/10/14	REVISED SIGNS	TW	

THEODORE WILKINSON
PROFESSIONAL ENGINEER
N.J. LICENSE NO. 39607

DATE