

Plaza 1200

Glendora, New Jersey



Leasing Information Package

Plaza 1200
Glendora, New Jersey



- Competitive price per square foot
- Excellent location
- Prestigious Gloucester Township
- Strong Demographics

Property Description

Plaza 1200 is a 10,000 square foot shopping center ideally located in Gloucester Township on the Black Horse Pike between 12th & 13th streets in Glendora, New Jersey. This is one of the most desirable retail locations in Camden County, NJ. The property's location and competitive price per square foot creates very solid opportunity for aggressive entrepreneurs.

Plaza 1200
Glendora, New Jersey



Location Overview

The subject property is located on the Black Horse Pike (Rt 168) which is a major commercial corridor in Camden County between Philadelphia and Atlantic City. The most notable aspect of the subject's location is the enormous amount of residential density which will provide business for the area's retailers. Demographics are extremely strong within a 1 mile radius of the subject property. Great exposure from drive by traffic and high household income numbers will support the success of the center for many years.

Location Highlights

- Located on thriving commercial corridor of Black Horse Pike
- Close proximity to large national retailers
- Hot spot for residential development
- Exposure to 35,000 cars per day
- 2 miles to Interstate 295 and the New Jersey Turnpike



MAPQUEST.

Map of 1200 Black Horse Pike
Glendora, NJ 08029-1306

Notes

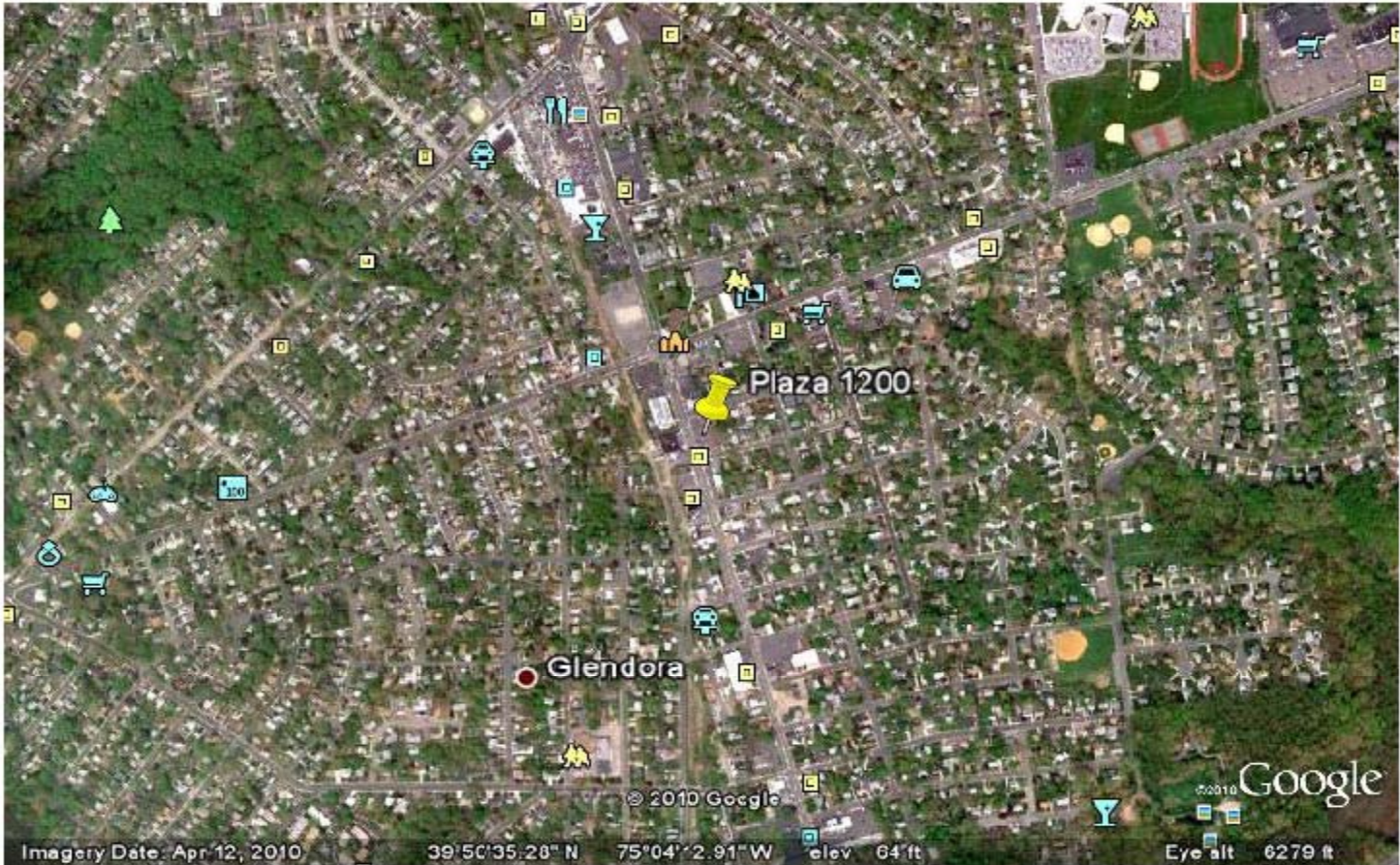


[All rights reserved. Use subject to license/conditions](#) | [Map Legend](#)

Directions and maps are informational only. We make no warranties on the accuracy of their content, road conditions or route usability or expeditiousness. You assume all risk of use. MapQuest and its suppliers shall not be liable to you for any loss or delay resulting from your use of MapQuest. Your use of MapQuest means you agree to our [Terms of Use](#)

Plaza 1200
Glendora, New Jersey

Aerial Photo



08029 5-Digit ZCTA, 080 3-Digit ZCTA - QT-P32. Income Distribution in 1999 of Hous... Page 1 of 1



QT-P32. Income Distribution in 1999 of Households and Families: 2000
Data Set: [Census 2000 Summary File 3 \(SF 3\) - Sample Data](#)
Geographic Area: **08029 5-Digit ZCTA**

NOTE: Data based on a sample except in P3, P4, H3, and H4. For information on confidentiality protection, sampling error, nonsampling error, definitions, and count corrections see <http://factfinder.census.gov/home/en/states/nla/census2.htm>.

Subject	Households	Families			Nonfamily households
		Total	Married-couple families	Female householder, no husband present	
NUMBER					
Total	1,864	1,330	1,067	206	824
Less than \$10,000	251	37	11	26	214
\$10,000 to \$14,999	126	17	0	17	117
\$15,000 to \$19,999	102	52	34	18	50
\$20,000 to \$24,999	136	64	56	8	64
\$25,000 to \$29,999	109	64	57	7	45
\$30,000 to \$34,999	87	73	55	10	14
\$35,000 to \$39,999	99	114	76	23	9
\$40,000 to \$44,999	129	112	95	17	21
\$45,000 to \$49,999	69	67	64	0	5
\$50,000 to \$59,999	211	164	141	17	53
\$60,000 to \$74,999	216	181	131	31	14
\$75,000 to \$99,999	216	200	173	23	18
\$100,000 to \$124,999	94	80	73	4	0
\$125,000 to \$149,999	29	29	29	0	0
\$150,000 to \$199,999	58	54	54	0	0
\$200,000 or more	22	22	18	4	0
Median income (dollars)	42,233	51,747	55,625	38,194	13,516
Mean income (dollars)	52,287	65,409	69,419	47,299	20,909
PERCENT DISTRIBUTION					
Total	100.0	100.0	100.0	100.0	100.0
Less than \$10,000	12.8	2.8	1.0	12.7	34.3
\$10,000 to \$14,999	6.4	1.3	0.0	8.3	16.8
\$15,000 to \$19,999	5.2	3.9	3.2	8.8	8.0
\$20,000 to \$24,999	7.0	4.8	5.2	3.9	10.3
\$25,000 to \$29,999	5.6	4.8	5.3	3.4	7.2
\$30,000 to \$34,999	4.5	5.5	5.2	4.9	2.2
\$35,000 to \$39,999	5.1	8.6	7.1	11.2	1.4
\$40,000 to \$44,999	6.6	8.4	8.9	8.3	3.4
\$45,000 to \$49,999	3.5	5.0	6.0	0.0	0.8
\$50,000 to \$59,999	10.8	12.3	13.2	8.3	8.5
\$60,000 to \$74,999	11.1	13.6	12.3	15.1	2.2
\$75,000 to \$99,999	11.1	15.0	16.2	11.2	2.9
\$100,000 to \$124,999	4.8	6.0	6.8	2.0	0.0
\$125,000 to \$149,999	1.5	2.2	2.7	0.0	0.0
\$150,000 to \$199,999	3.0	4.1	5.1	0.0	0.0
\$200,000 or more	1.1	1.7	1.7	2.0	0.0

(X) Not applicable.
Source: U.S. Census Bureau, Census 2000 Summary File 3, Matrices P52, P53, P54, P79, P80, P81, PCT38, PCT40, and PCT41.



FACT SHEET

Zip Code Tabulation Area 08029

View a Fact Sheet for a race, ethnic, or ancestry group

Census 2000 Demographic Profile Highlights:

General Characteristics - show more >>

	Number	Percent	U.S.		
Total population	4,943				
Male	2,320	46.9	49.1%	map	brief
Female	2,623	53.1	50.9%	map	brief
Median age (years)	40.4	(X)	35.3	map	brief
Under 5 years	253	5.1	6.8%	map	
18 years and over	3,882	78.5	74.3%		
65 years and over	1,007	20.4	12.4%	map	brief
One race	4,894	99.0	97.6%		
White	4,824	97.6	75.1%	map	brief
Black or African American	22	0.4	12.3%	map	brief
American Indian and Alaska Native	8	0.2	0.9%	map	brief
Asian	17	0.3	3.6%	map	brief
Native Hawaiian and Other Pacific Islander	1	0.0	0.1%	map	brief
Some other race	22	0.4	5.5%	map	
Two or more races	49	1.0	2.4%	map	brief
Hispanic or Latino (of any race)	78	1.6	12.5%	map	brief
Household population	4,943	100.0	97.2%	map	brief
Group quarters population	0	0.0	2.8%	map	
Average household size	2.52	(X)	2.59	map	brief
Average family size	3.16	(X)	3.14	map	
Total housing units	2,012			map	
Occupied housing units	1,859	97.4	91.0%		brief
Owner-occupied housing units	1,535	78.4	66.2%	map	
Renter-occupied housing units	424	21.6	33.8%	map	brief
Vacant housing units	53	2.6	9.0%	map	

Social Characteristics - show more >>

	Number	Percent	U.S.		
Population 25 years and over	3,516				
High school graduate or higher	2,465	70.1	80.4%	map	brief
Bachelor's degree or higher	332	9.4	24.4%	map	
Civilian veterans (civilian population 18 years and over)	670	17.3	12.7%	map	brief
Disability status (population 5 years and over)	1,050	22.6	19.3%	map	brief
Foreign born	208	4.2	11.1%	map	brief
Male, Now married, except separated (population 15 years and over)	1,132	63.4	56.7%		brief
Female, Now married, except separated (population 15 years and over)	1,131	49.9	52.1%		brief
Speak a language other than English at home (population 5 years and over)	358	7.7	17.9%	map	brief

Economic Characteristics - show more >>

	Number	Percent	U.S.		
In labor force (population 16 years and over)	2,400	60.1	63.9%		brief
Mean travel time to work in minutes (workers 16 years and older)	26.5	(X)	25.5	map	brief
Median household income in 1999 (dollars)	42,233	(X)	41,994	map	
Median family income in 1999 (dollars)	51,747	(X)	50,046	map	
Per capita income in 1999 (dollars)	20,981	(X)	21,587	map	
Families below poverty level	45	3.4	9.2%	map	brief
Individuals below poverty level	310	6.3	12.4%	map	

Housing Characteristics - show more >>

	Number	Percent	U.S.
--	--------	---------	------

Plaza 1200 Glendora

Store #	Store #	Store #	Store #	Store #	Store #
1	2	3	4	5	6

Sq Ft	1440	1440	1820	1800	1887	1903	10,200
Address of unit	1216	1214	1212	1208	1204	1200	
CAM %	14.1%	14.1%	18.8%	17.8%	16.8%	16.7%	

Tenant List

Store #

1	Dominos Pizza	6	A&J Nails
2	China Star	8	Italian Terrace
3	Vooant		
4	A&J Hair Salon		