

Stone's Throw - Where an Easier Way of Life Awaits you.

Easier . . . because its convenient location off Exit 21 of I-295 puts you right around the corner from everywhere. Stone's Throw is a quick commute from Philadelphia, Wilmington, and virtually anywhere along the entire South Jersey commercial corridor.

Easier . . . because shopping is plentiful and exciting nightlife is just a stone's throw away. The Deptford, Cherry Hill, and Echelon malls are practically at your doorstep, and all the glitter of Atlantic City is yours in less than an hour.

Easier . . . because the townhouse condominiums at Stone's Throw give you all the advantages of home ownership with none of the responsibilities. There's

no yard work, no exterior maintenance, and no snow shoveling. At Stone's Throw, your free time is all yours. Enjoy a refreshing swim in the private pool or an invigorating set of tennis at the private court. You'll also be surrounded by 25 public playgrounds and athletic fields, plus two challenging golf courses and the new township library within walking distance.

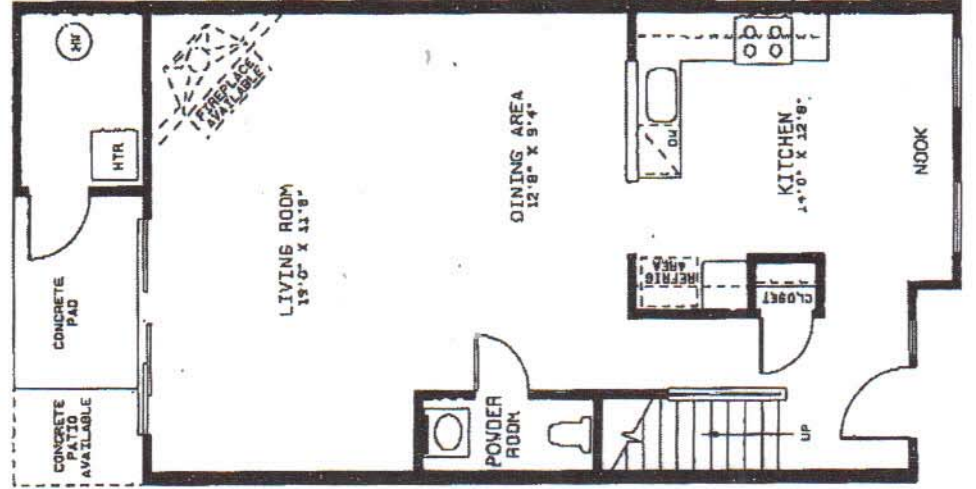
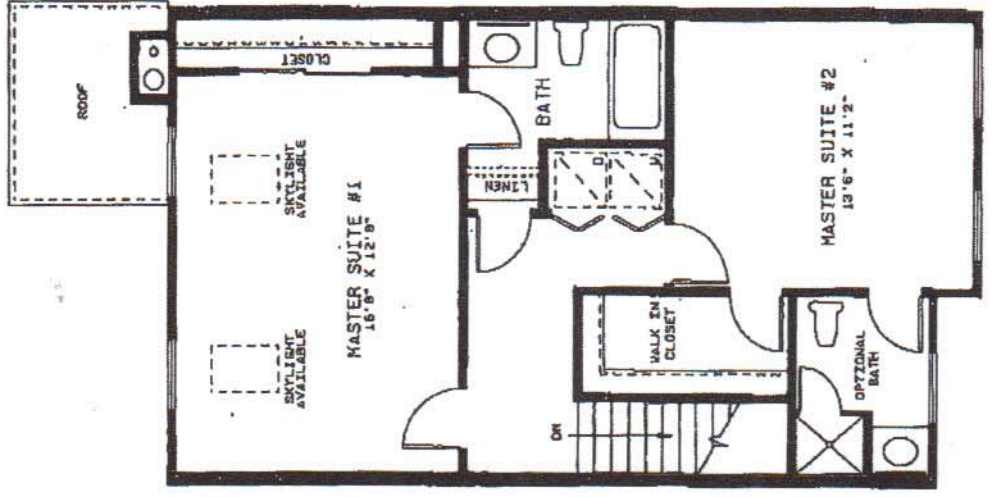
Easier . . . because Stone's Throw is a community designed and built by Kevin D. Scarborough, with all the amenities you want and need for carefree living. And with a level of quality and an attention to detail that is unexpected in homes this affordable.



artist concept

FLOOR PLANS

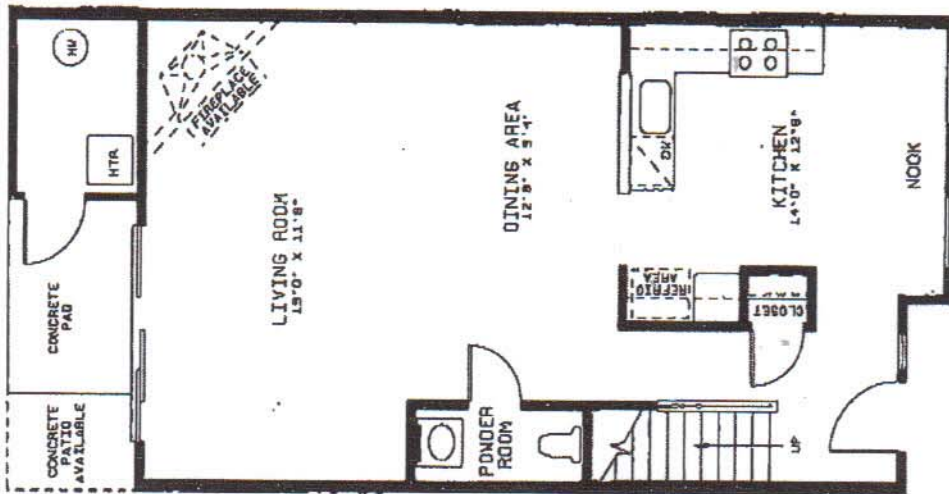
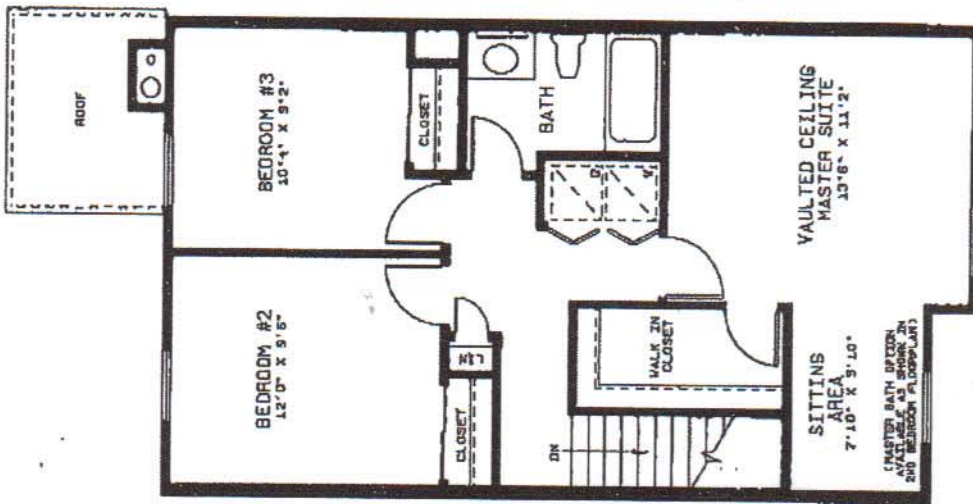
Stonington 2 Bedroom



Dimensions approximate. May vary due to field variations.

FLOOR PLANS

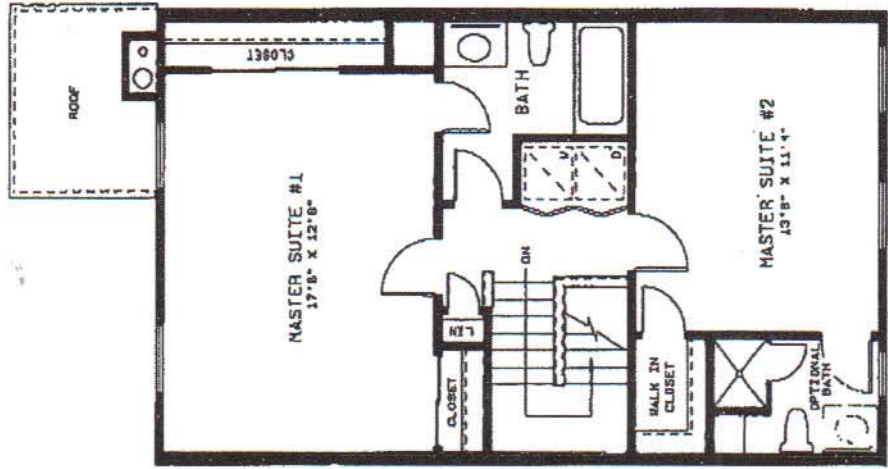
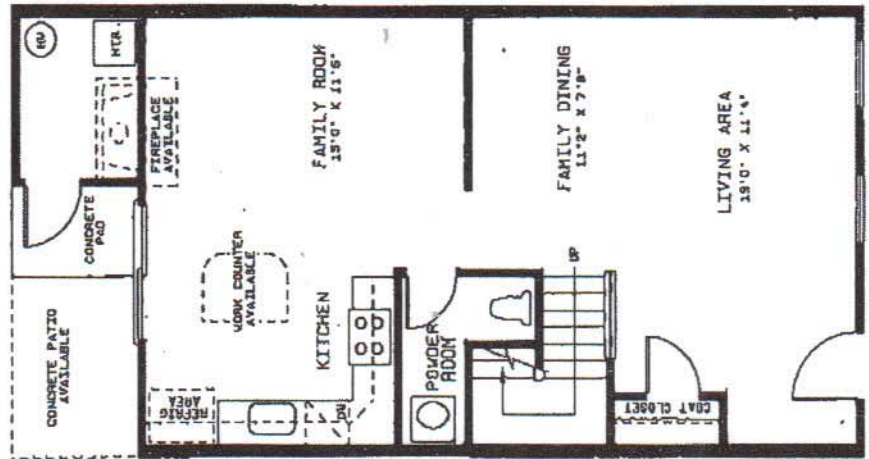
Stonington 3 Bedroom



Dimensions approximate. May vary due to field variations.

FLOOR PLANS

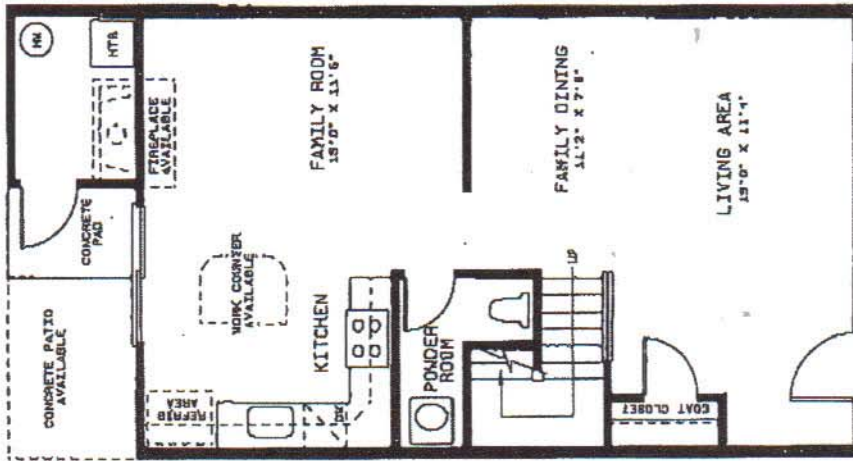
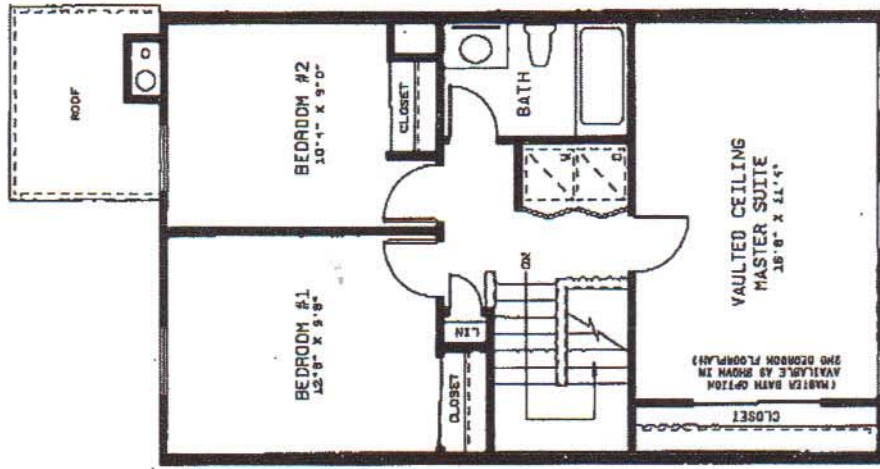
Rockport 2 Bedroom



Dimensions approximate. May vary due to field variations.

FLOOR PLANS

Rockport
3 Bedroom



Dimensions approximate. May vary due to field variations.